

Flat BS Tester

Brake & Speed Meter Tester

FLAT BRAKE & SPEED METER TESTER MODEL BS-2009/2012

Flat and Compact. BS Tester Creating an Ideal Vehicle Test Environment



* The photo is BS-2012.

For light vehicles to large buses/trucks

Allowable axle load **10t**

Compact body with **456 mm** height

■ Creating a Flat Vehicle Inspection Line

The flat body blends well with the environment of the factory and you can work without watching your step. It improves the safety and efficiency much more.

■ Frame Full Cover Method

This method reduces the period and cost of installation works. Since the existing pit can be used, it is also recommended as a replacement.

■ Two Types of Rollers Selectable to Suit the Application

Grooved roller
BS-2009

This roller has excellent cost effectiveness. It can be used for all applications, including for vehicle inspection in snowfall areas.

Grooved quiet roller
BS-2012

This unique roller reduces metallic friction noise during speed measurement while maintaining the same braking force and durability. The general unpleasant noise level from 800 Hz to 2.5 kHz is reduced to suppress a high-pitched squealing sound.

Indicator

You can select an analog or digital meter type.

Analog meter type



- Easy-to-read large indicator.
- Single-axis double-needles (green for the left and red for the right wheel) allow you to easily read the measurement results.

* The speed meter is indicated in digital form.



Digital meter type



- Hold display is also available depending on the application.
- Brake measurement mode: the sum of and difference between the left and right wheels, and the highest and maximum values of the sum can be displayed.



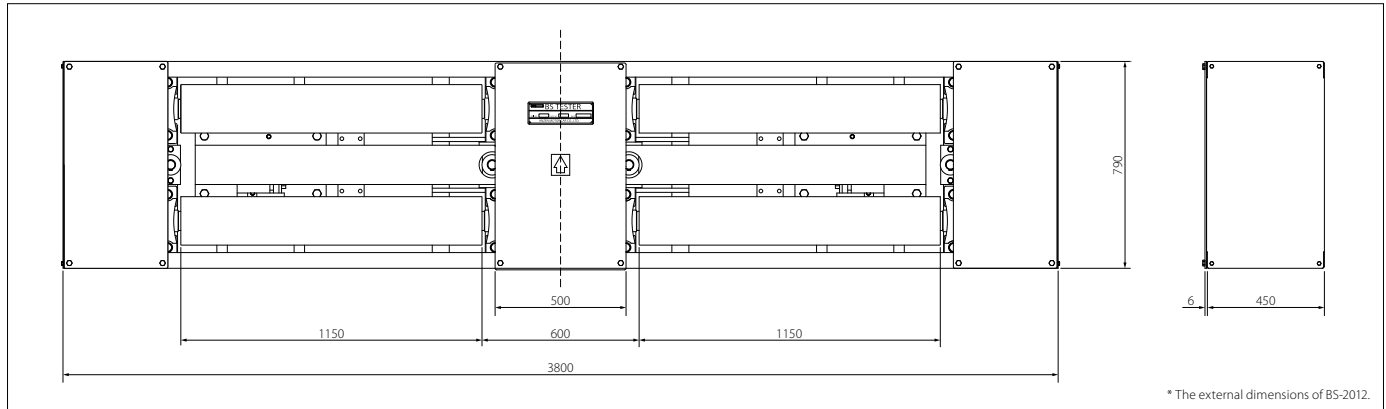
Option

Hanging type meter

- Service work space can be used effectively.



External Dimensions



Specifications (tester)

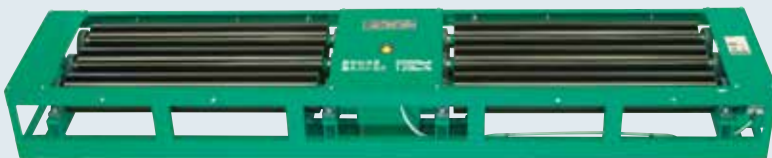
Model		BS-2009	BS-2012
MLIT registered model		BS-2009	BS-2012
Model test number		JASEA-B-S-23	JASEA-B-S-36
Allowable axle load (kg)		10,000	
Roller	Outside diameter × length (mm)	φ185×1,150	
	Front-rear axle distance (mm)	428	
	Left/right inner/outer width (mm)	600/2,900	
	Rotation (50/60 Hz) (rpm)	4.8/5.7	
	Drive motor (V/kW)	AC200 three-phase/1.5×2	
Brake meter test	Maximum braking force (daN)	3,000	
	Sensor	Load cell	
Speed meter test	Maximum test speed (km/h)	120 (within continuous 60 seconds)	
	Sensor	Rotary encoder	
Tester dimensions (mm)		W3,800×L790×D456	
Tester weight (kg)		1,200	
Power supply (V/A) (V/kW)		AC100/single-phase & AC200 three-phase/1.5×2	
Operating air pressure (MPa)		0.7	

Specifications (indicator)

Method		Analog meter	Digital meter
Brake test	Indication range (daN)	0 to 3,000	0 to 3,000
	Minimum indication (daN)	5(low)/20 (medium)/50 (high)	1
Speed meter test	Indication range (km/h)	0 to 120	0 to 120
	Minimum indication (km/h)	0.1	0.1
	Speed confirmation device (km/h)	None (setting can be changed)	
Indicator dimensions (mm)		W500×D220×H400	W460×D100×H275

Free Roller for Large-sized Vehicles **MODEL AFR-2006**

Flat vehicle inspection line in combination with BS-2009/BS-2012



Specifications

Model		AFR-2006
Allowable axle load (kg)		10,000
Roller outside diameter×length (mm)		φ185×1,150
Operating air pressure (MPa)		0.5
Tester dimensions (mm)		W3,400×L730×D370

Before using this product, carefully read the precautions indicated by **⚠ DANGER**, **⚠ WARNING**, and **⚠ CAUTION** in the manual supplied with this product to ensure correct use.

ANZEN 4-16-25 Shibaura, Minato-ku, Tokyo 108-0023
 安全自動車株式会社 Phone: +81 3-5441-3412 Fax: +81 3-5441-8848
 ANZEN website: <http://www.anzen.co.jp>

BS-2009-ALM-12 CD:01123338
 BS-2009-ALM-51 CD:01123339
 BS-2009-AH CD:01123334
 BS-2009-AS CD:01123333
 BS-2009-DS CD:01123335
 BS-2009-DH CD:01123336
 BS-2012-NH CD:01123353
 BS-2012-NS CD:01123352
 BS-2012-DNH CD:01123351
 BS-2012-DNS CD:01123350
 BS-2012-ALM-12 CD:01123348
 BS-2012-ALM-51 CD:01123349

CAT1.1'1505_010418_2552

* The appearance and specifications are subject to change without notice.